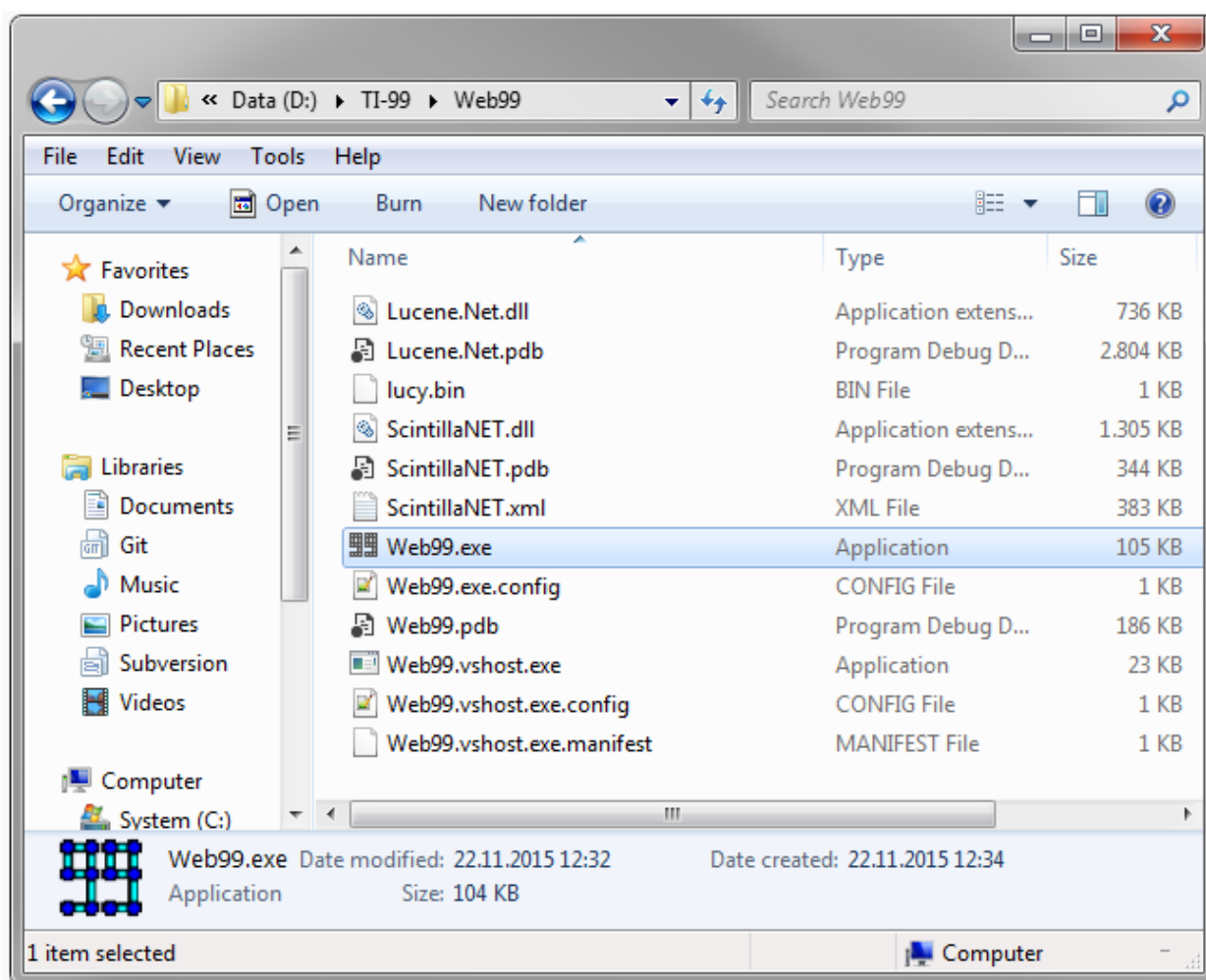


Web99

With your help Web99 can scan through your Disk Image Collection on your Harddisk or Thumbdrive. Web99 will analyse each and every Disk Image. Each identified Ti File will be analysed. This process has to be done only once. All retrieved information is saved inside a searchable Index. The original data is no longer necessary for Web99 to work.

You will not only get the Disknames, Ti Filenames, Filesizes but you will be able to

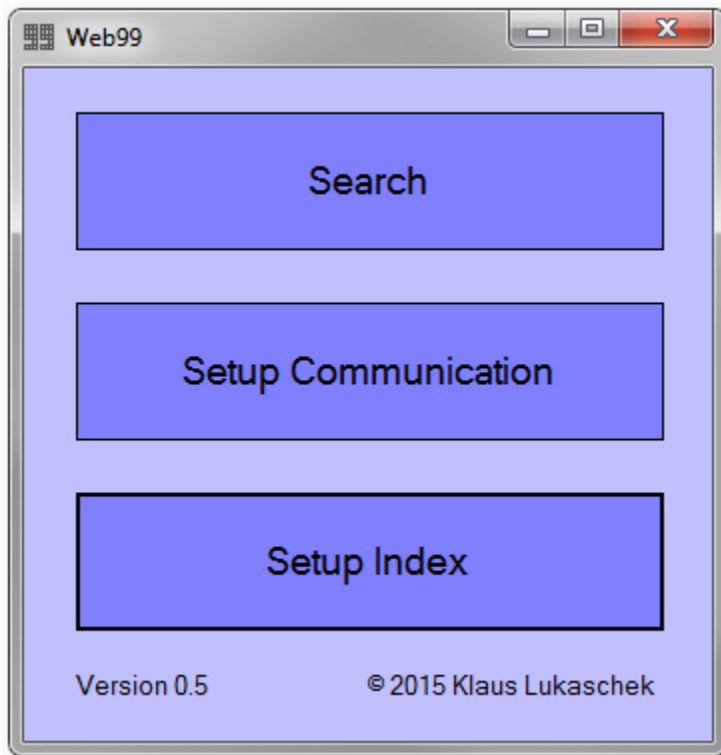
The Files



Save Web99 to a Drive on your Computer with enough Free Disk Memory. Because Web99 creates a Folder in the same Directory for its Index called "index". The larger your collection of Disk Images is, the larger the Index will get.

When Web99 is opened for the first time, it creates this Folder and inside an empty Index.

The program

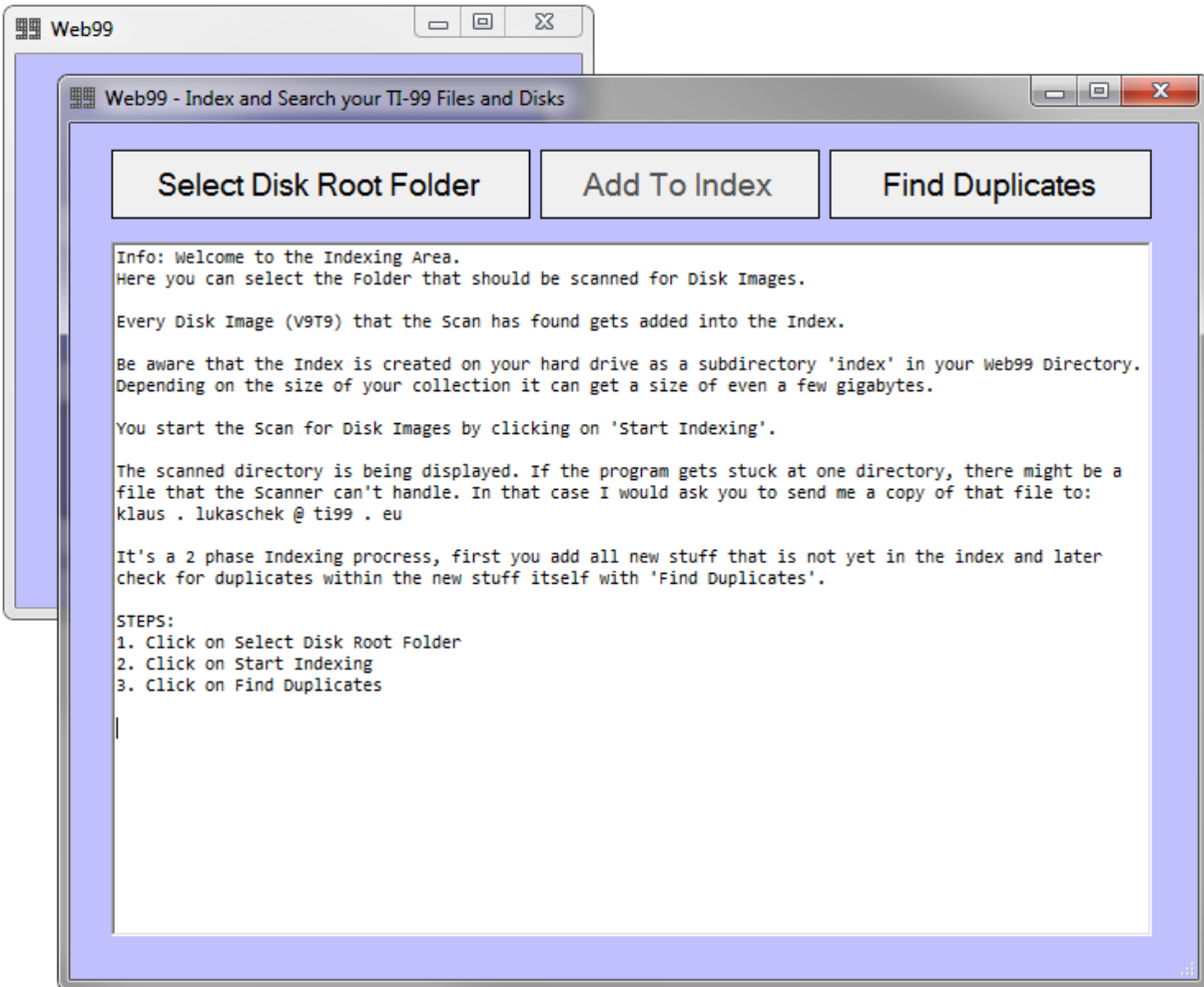


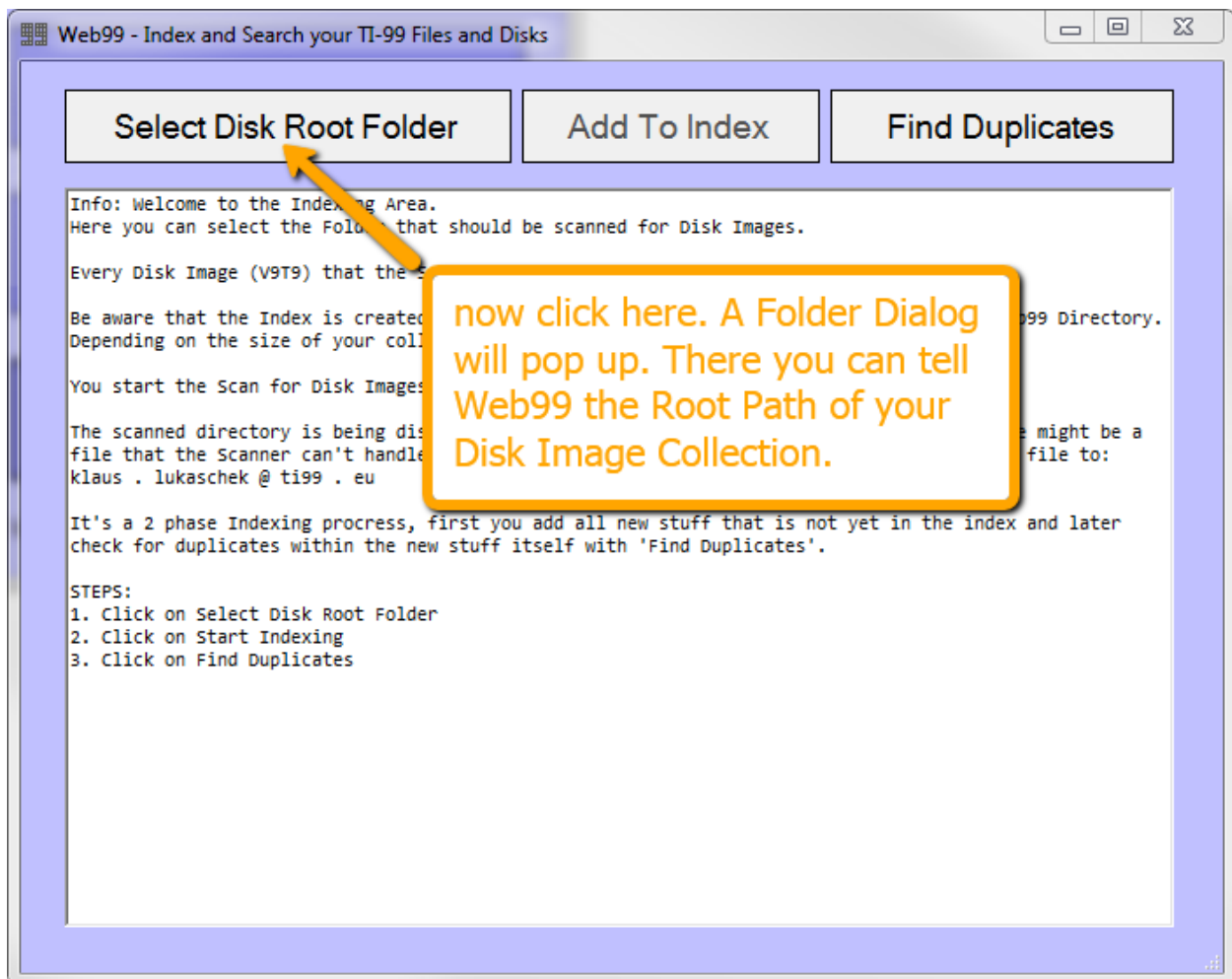
You only need to setup the Index once.

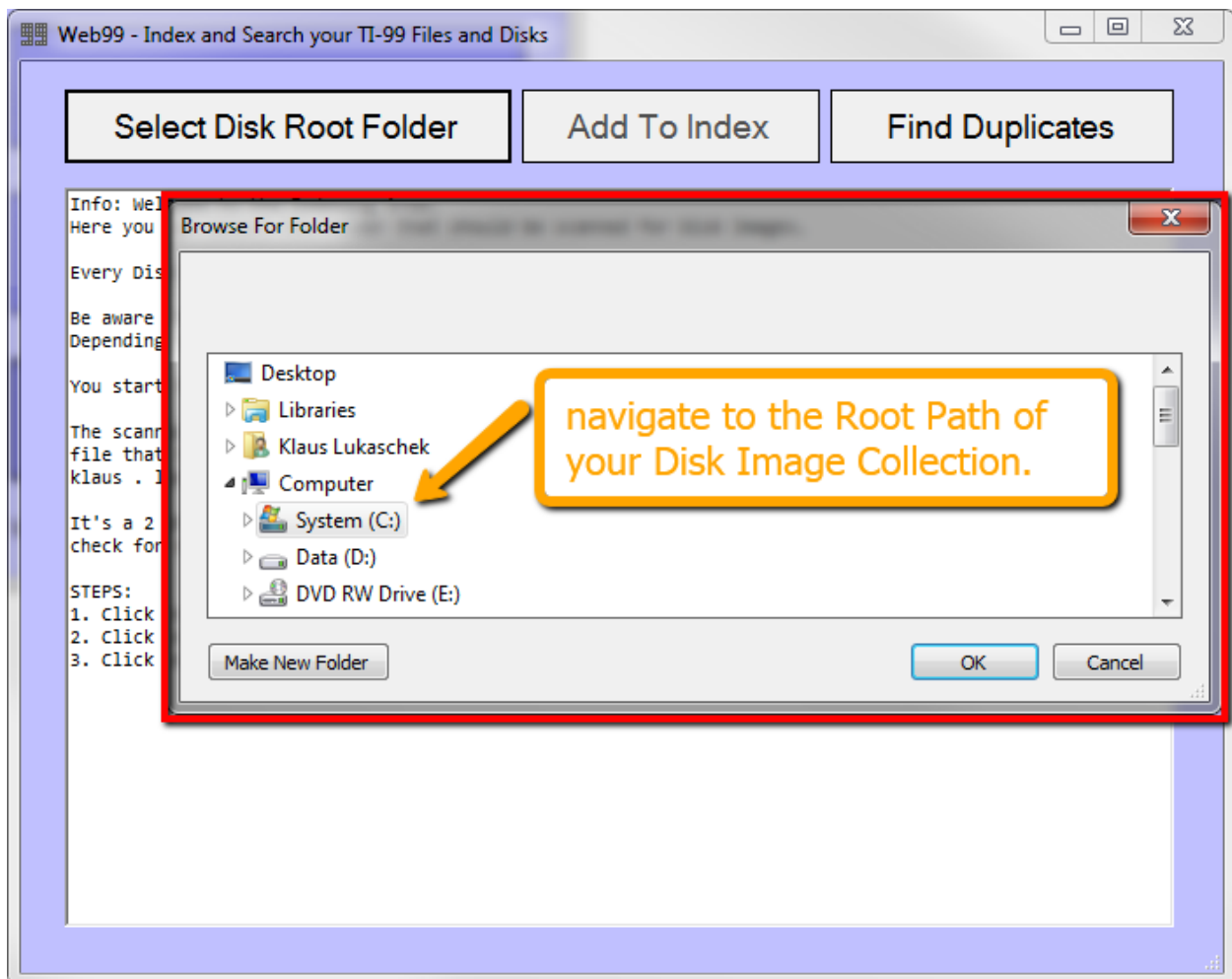
Index Setup

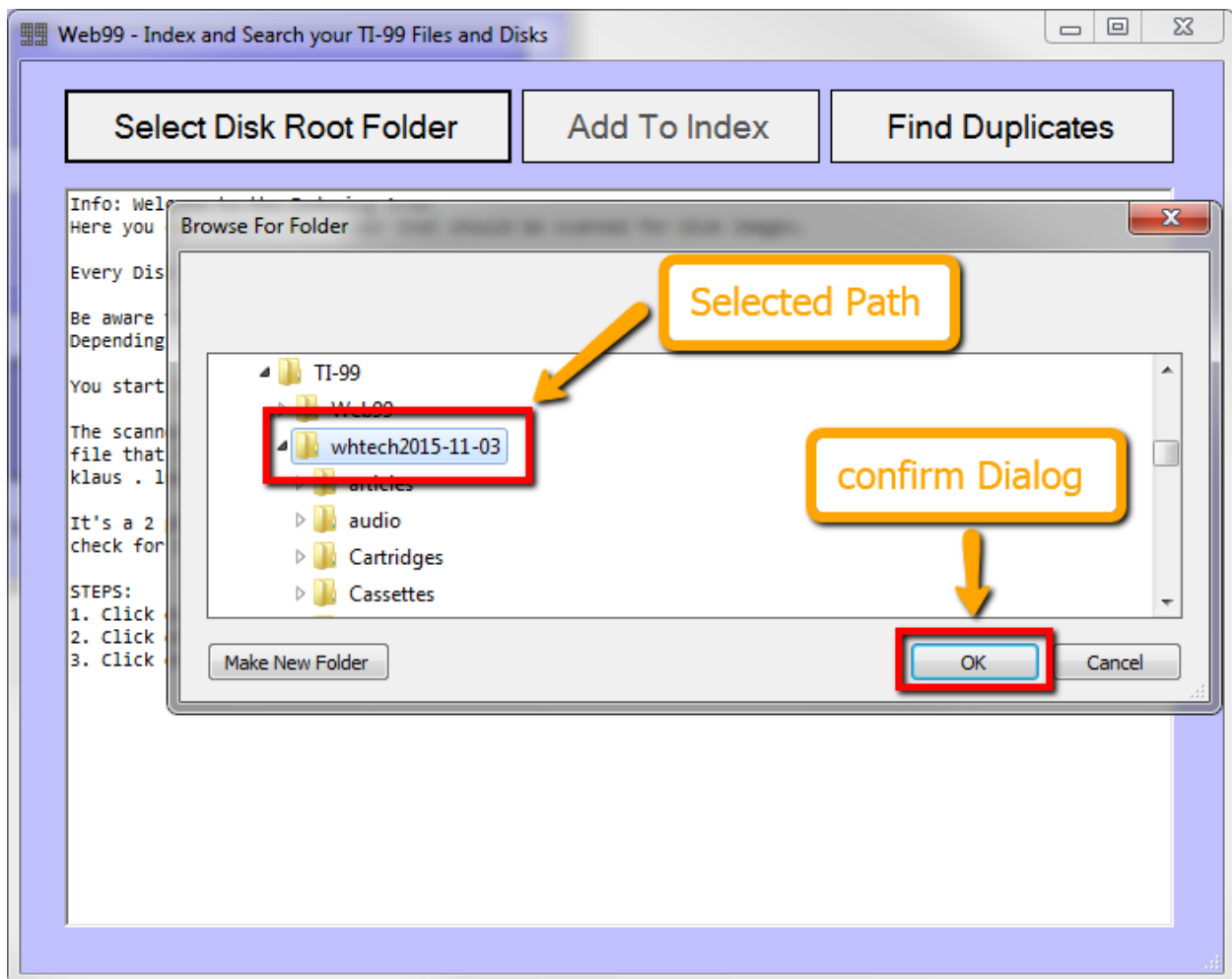


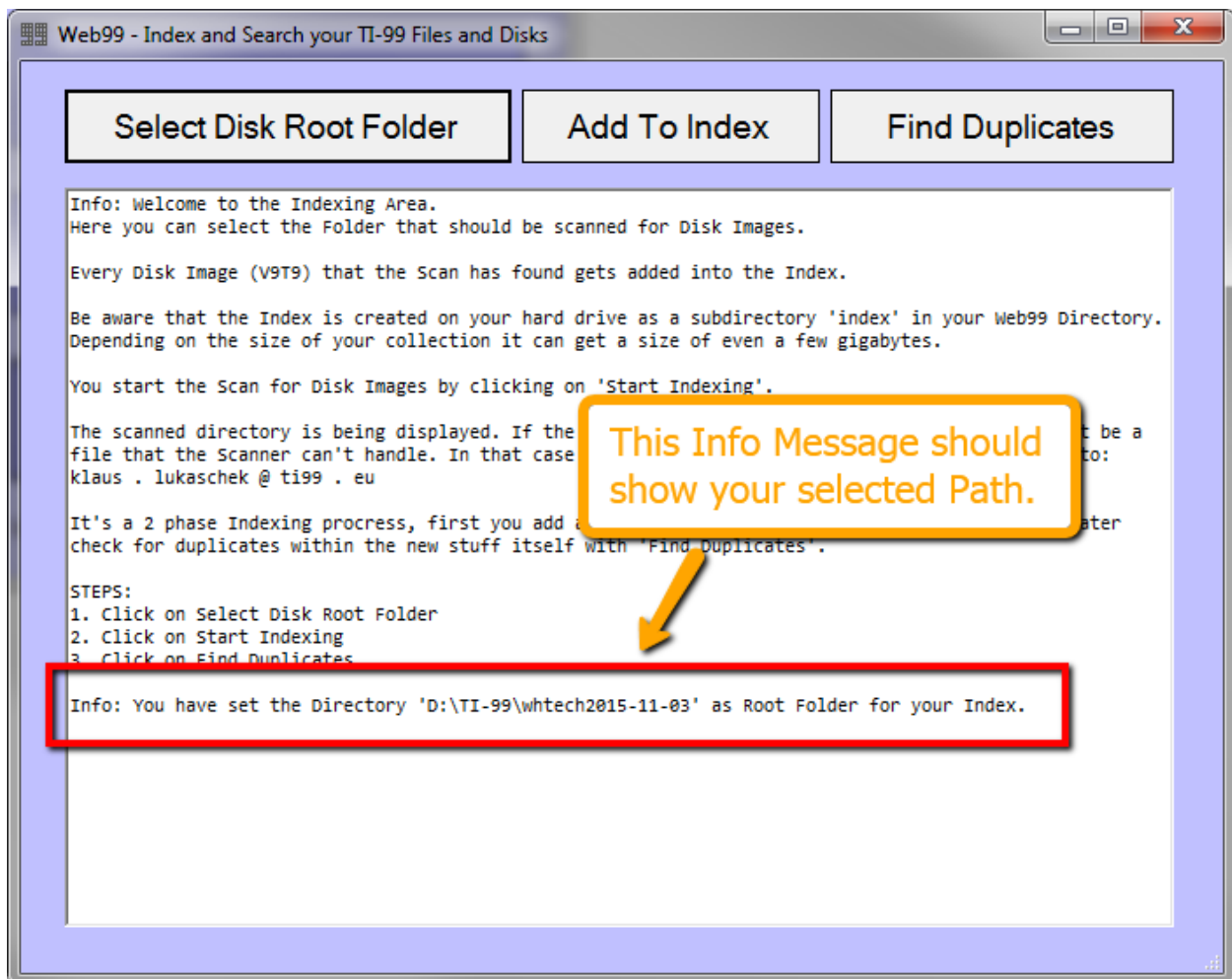
click here when using
Web99 for the first time.

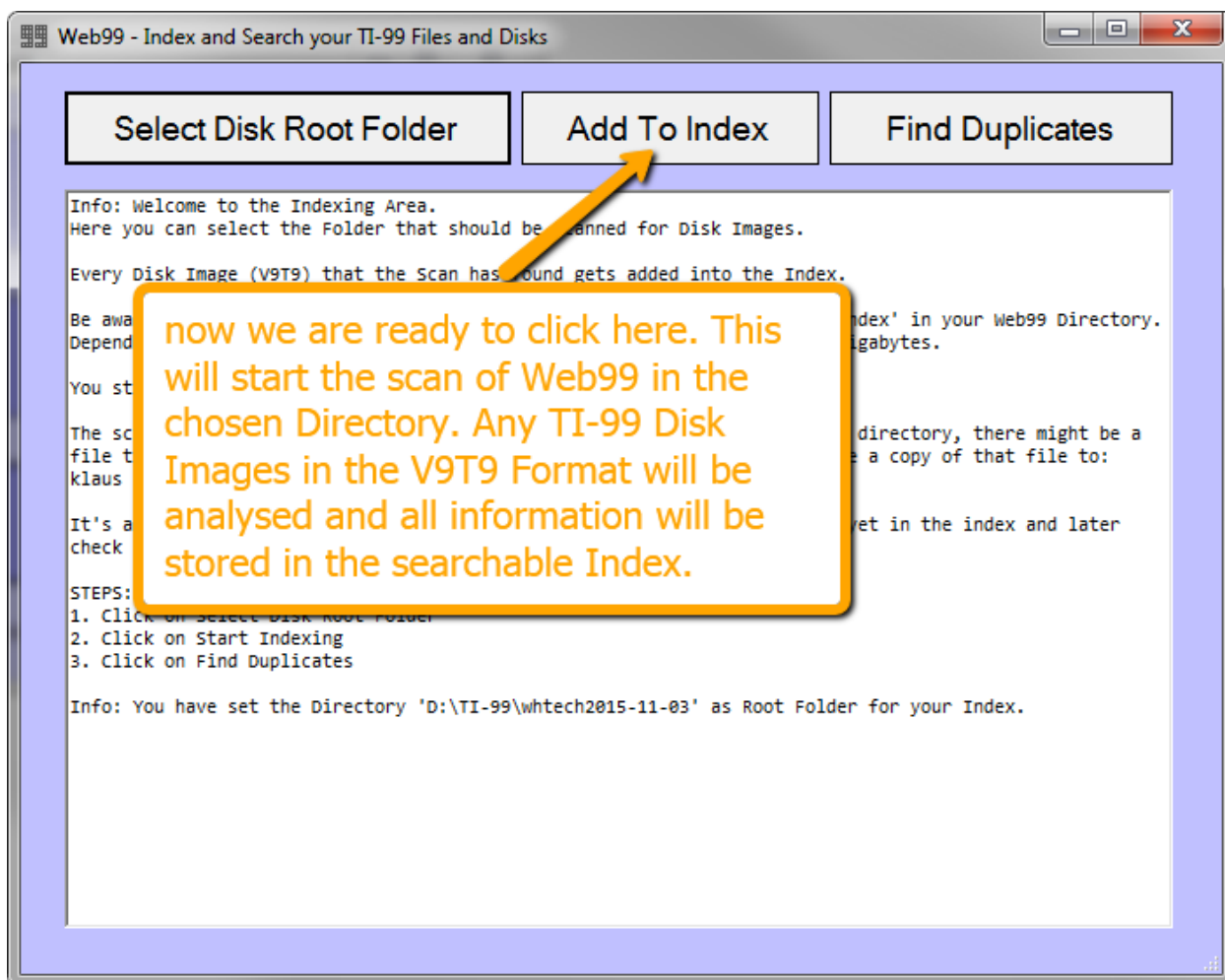


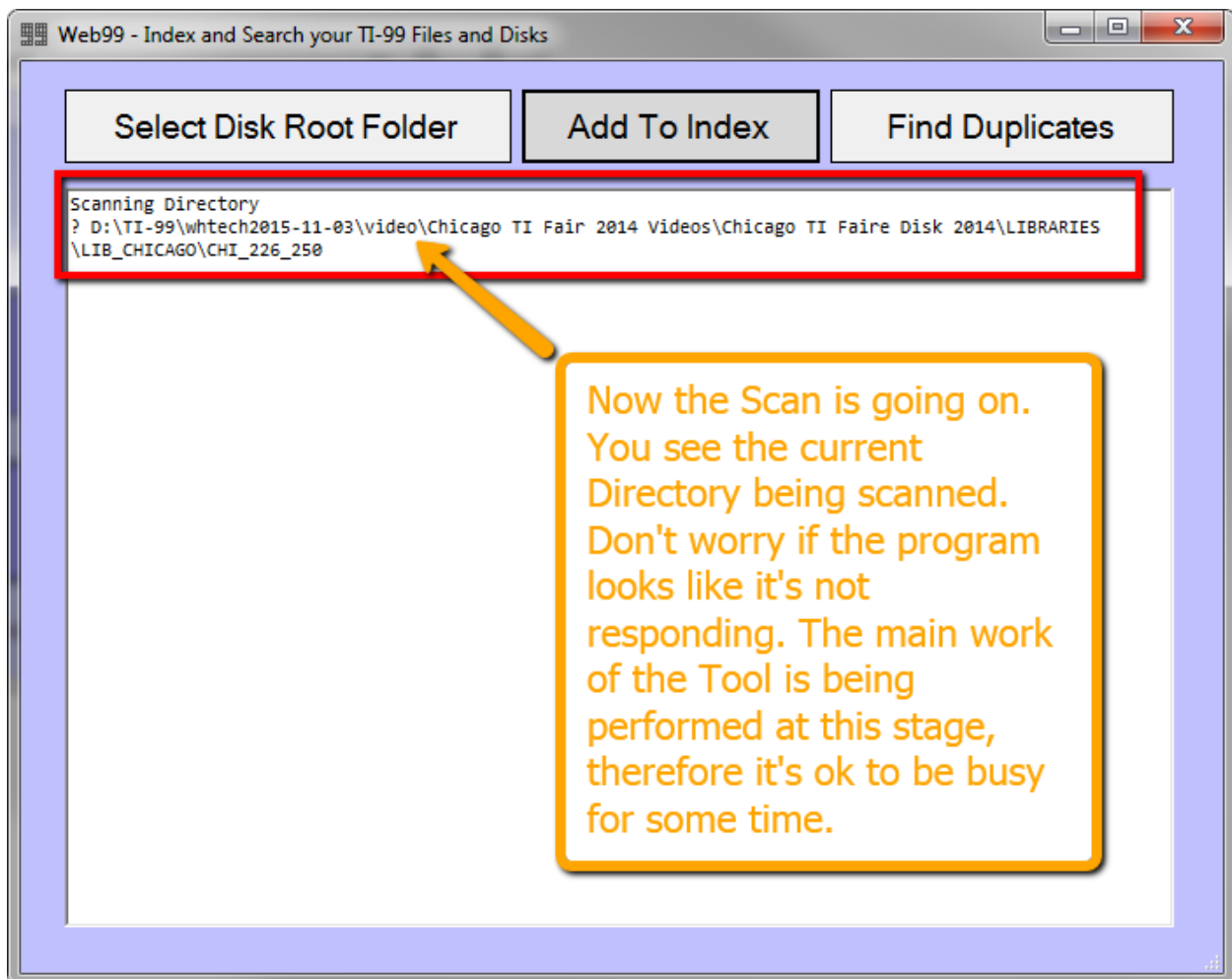


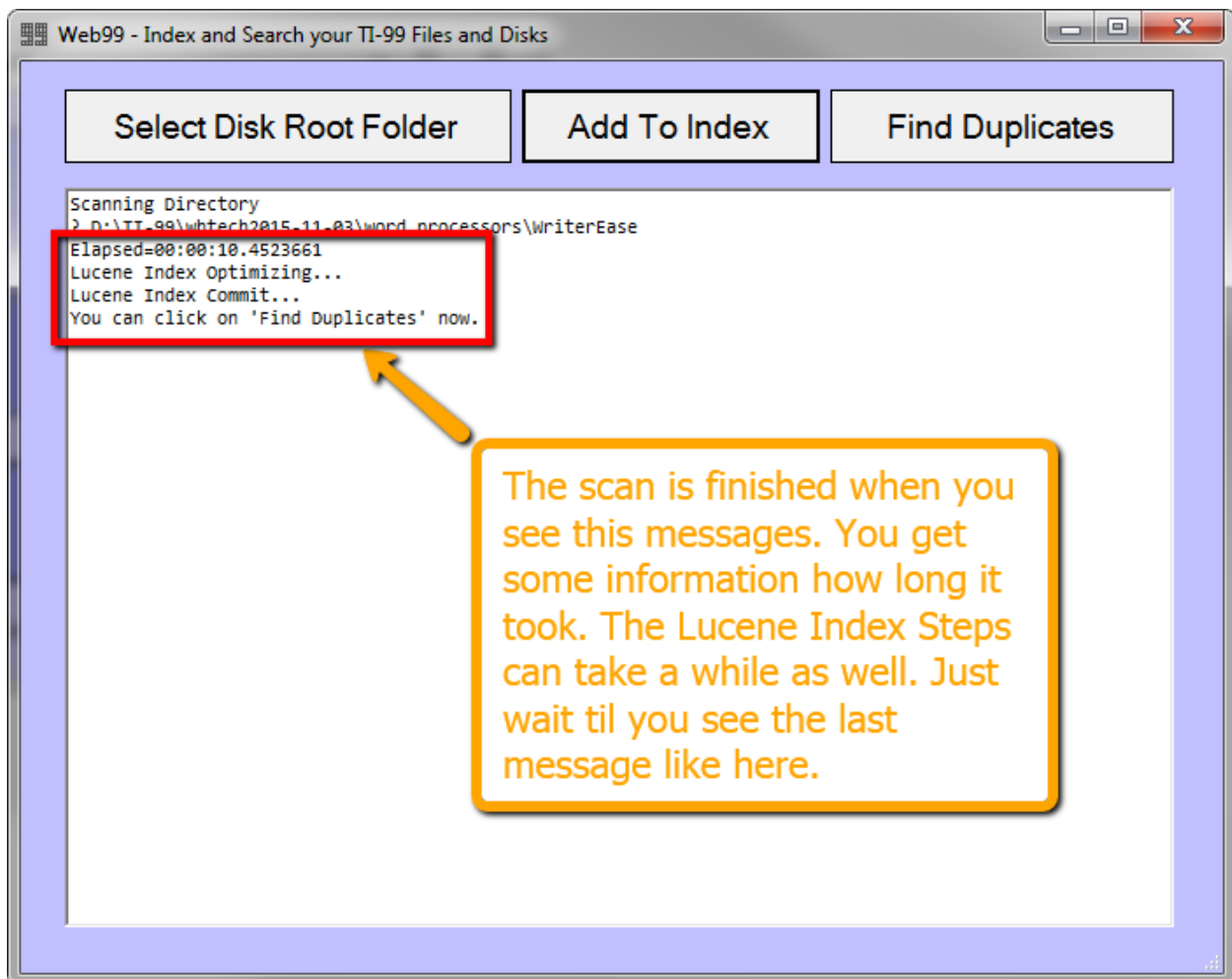




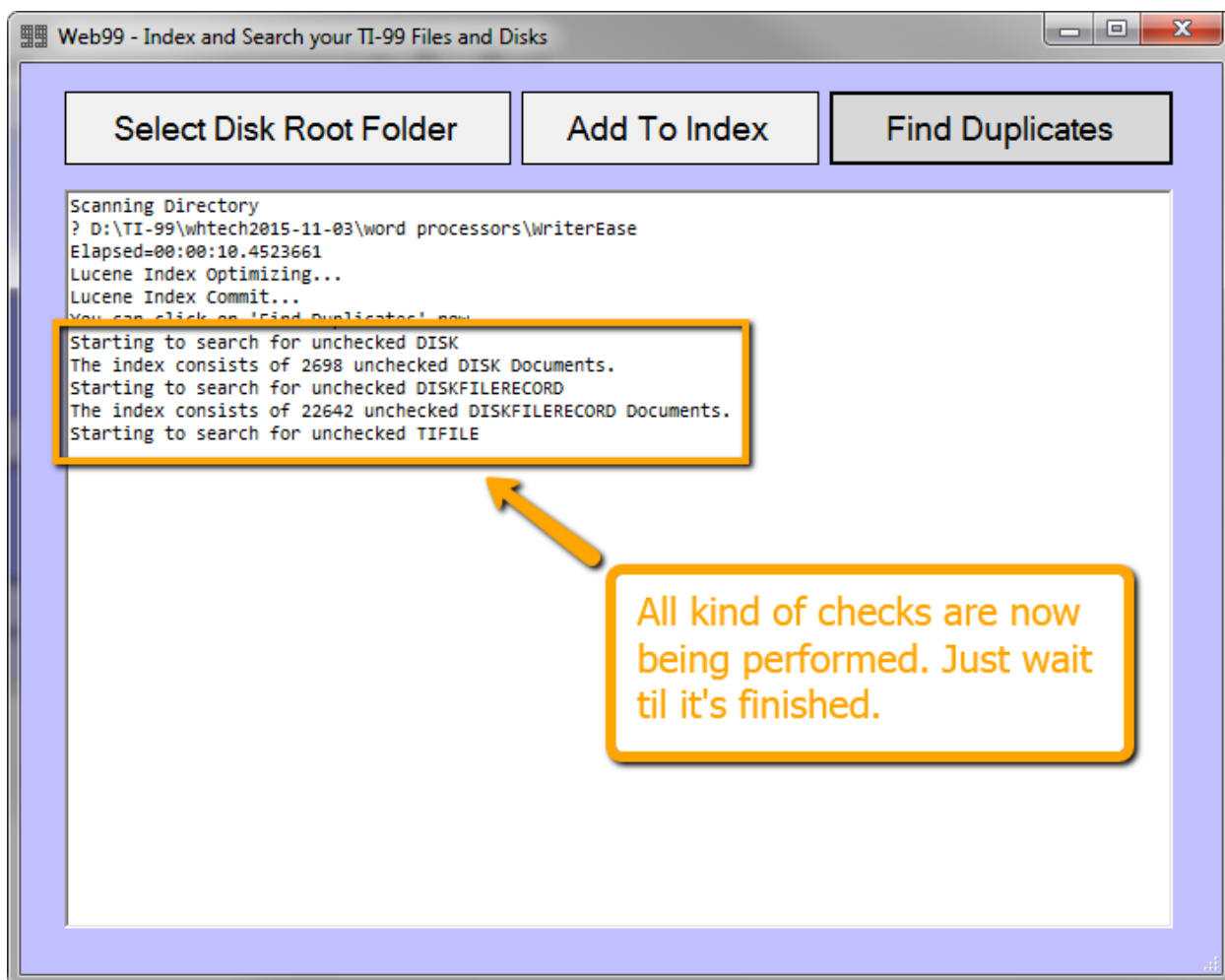


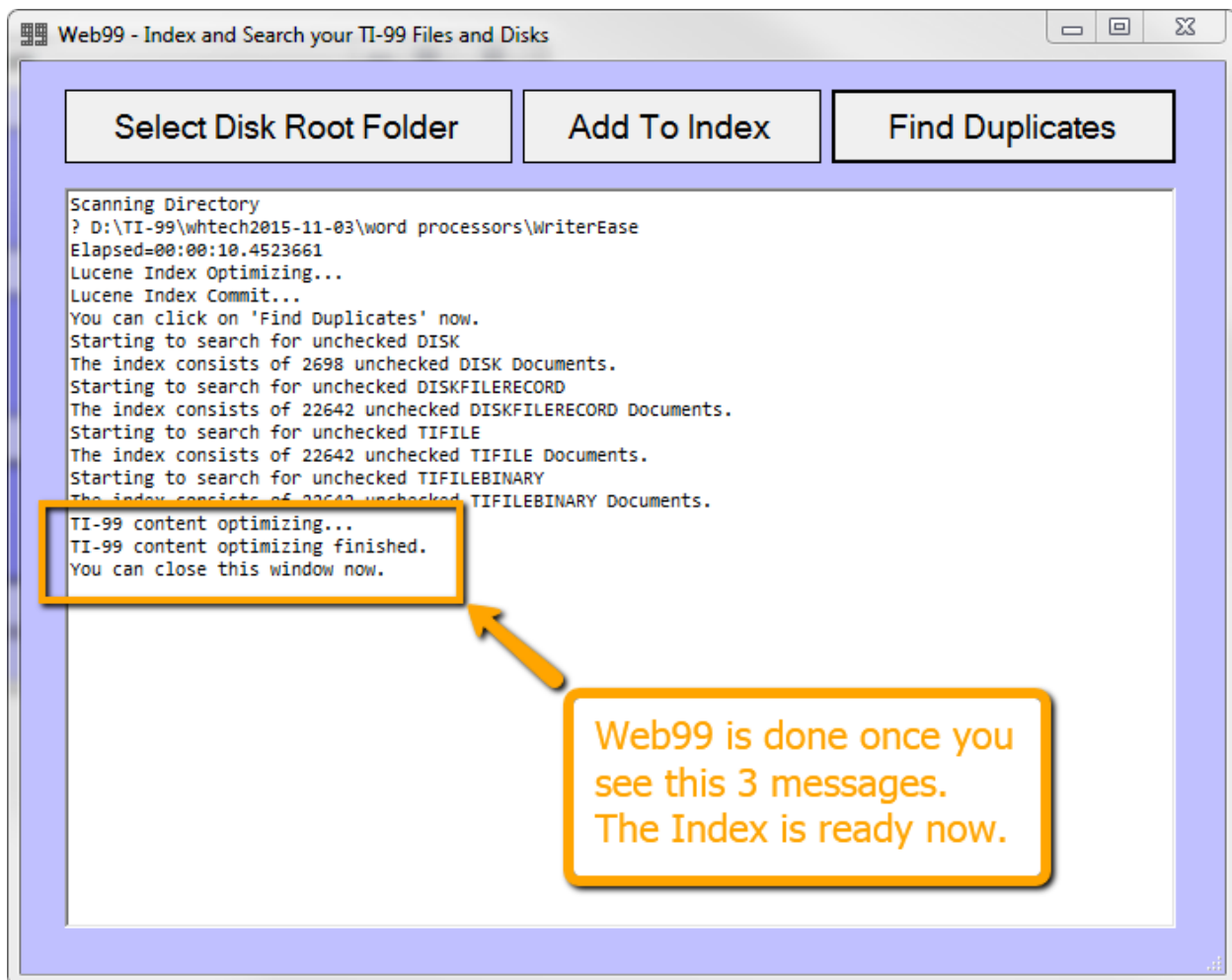


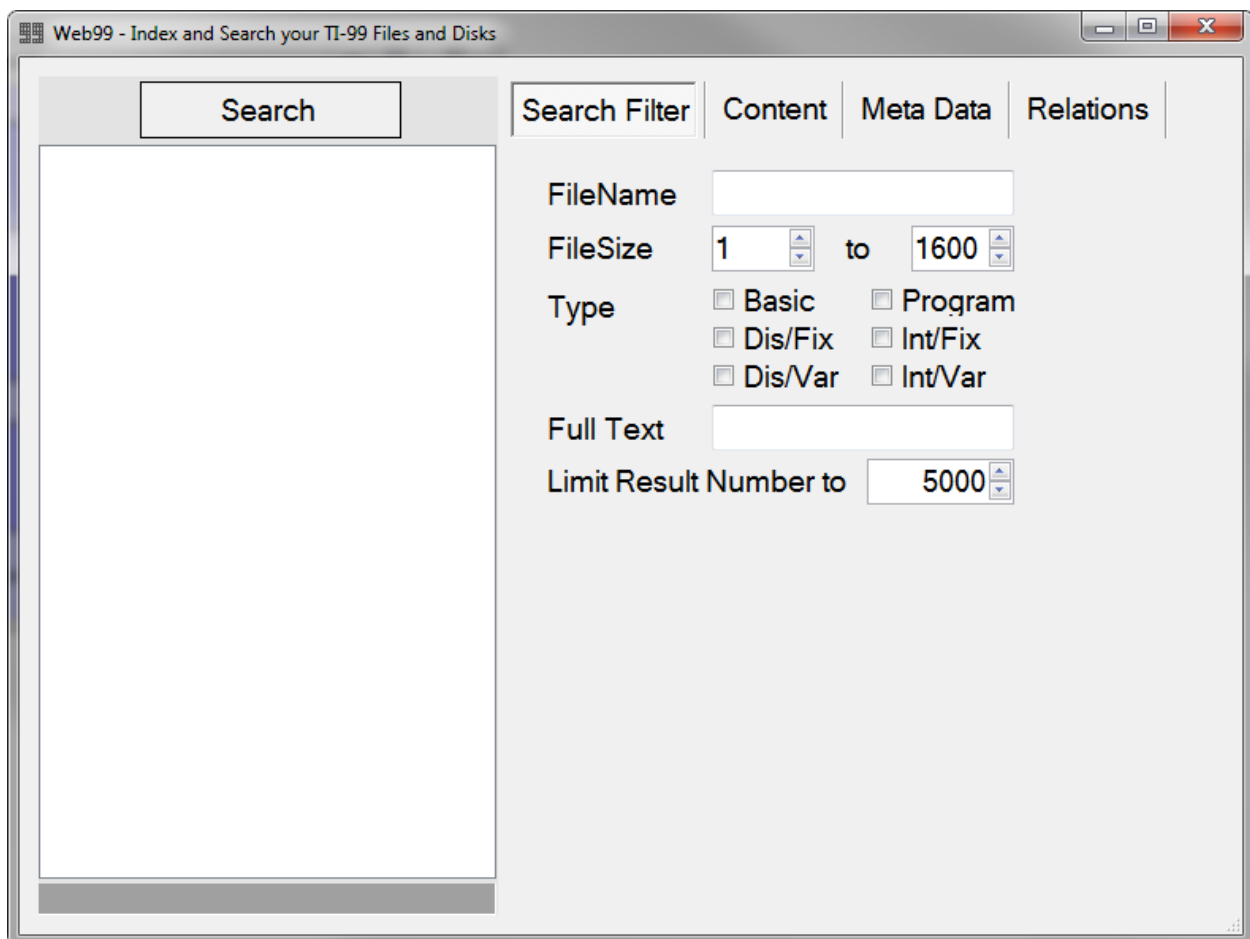
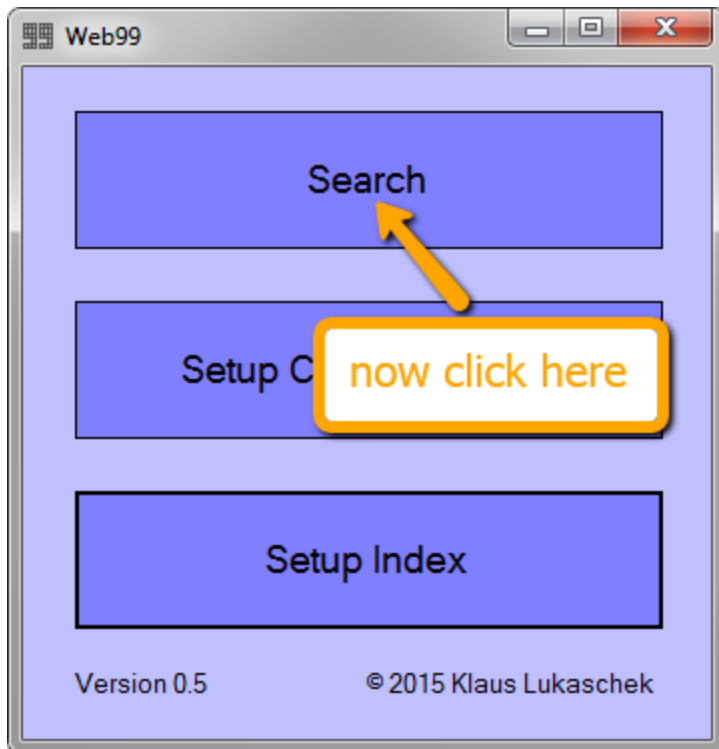


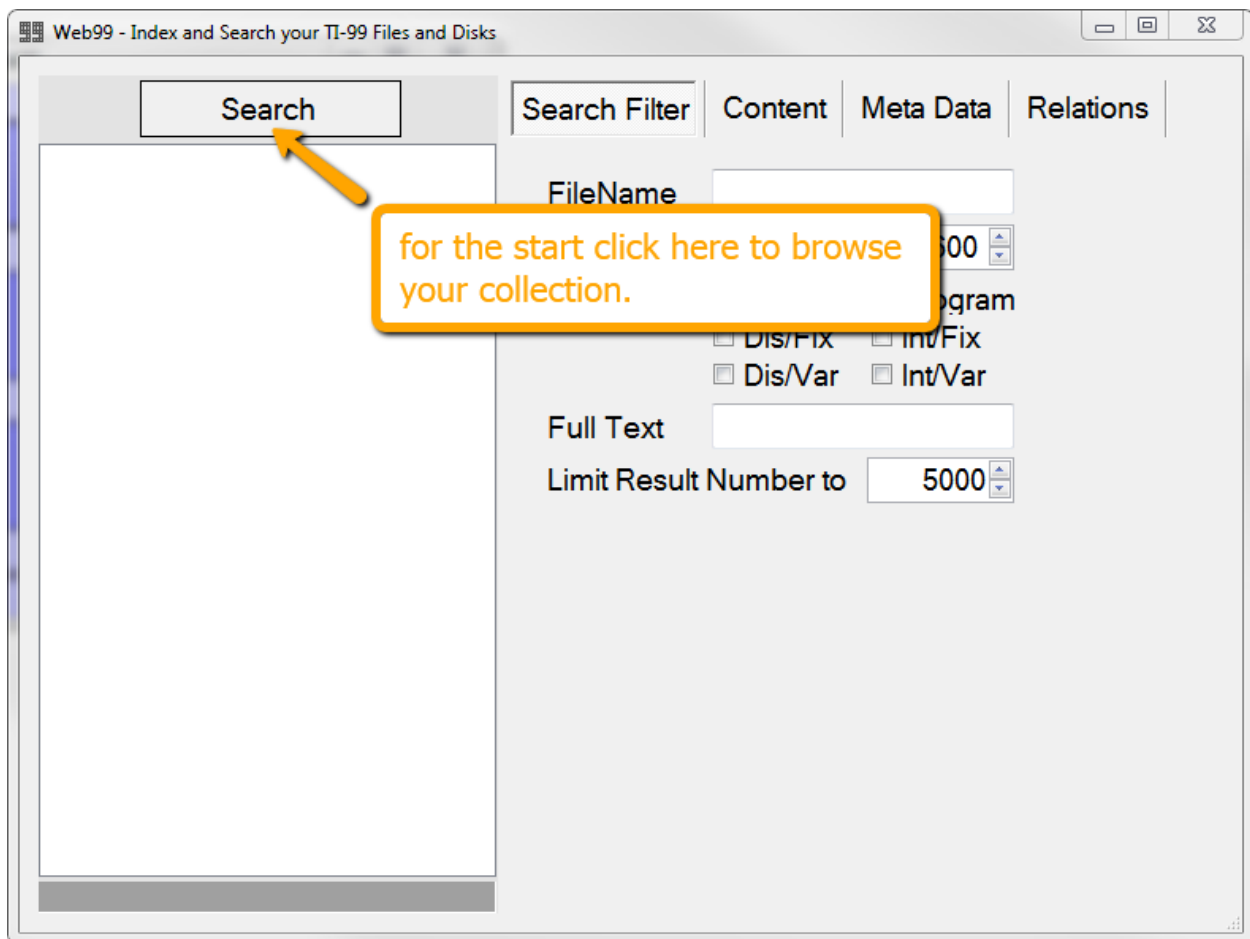


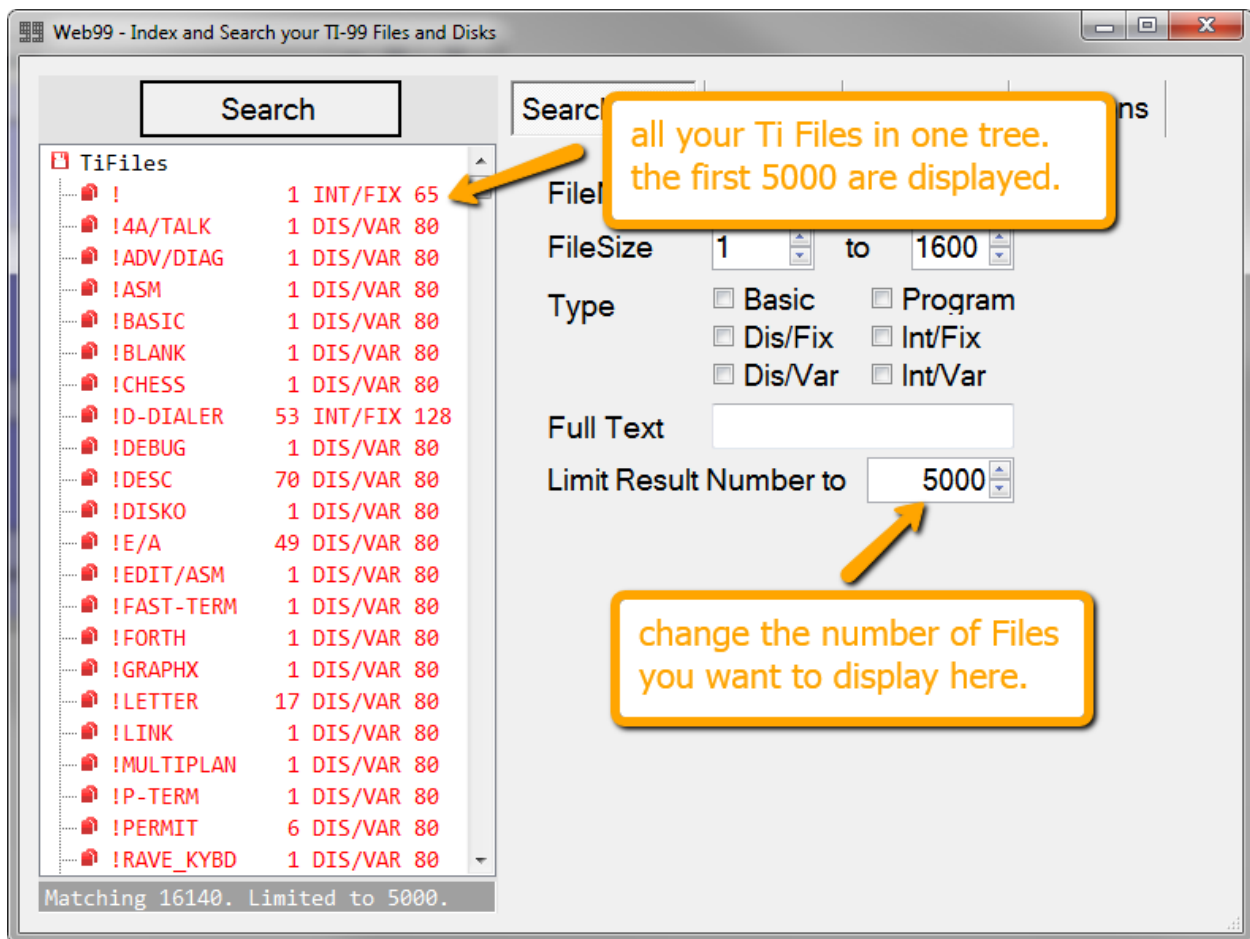


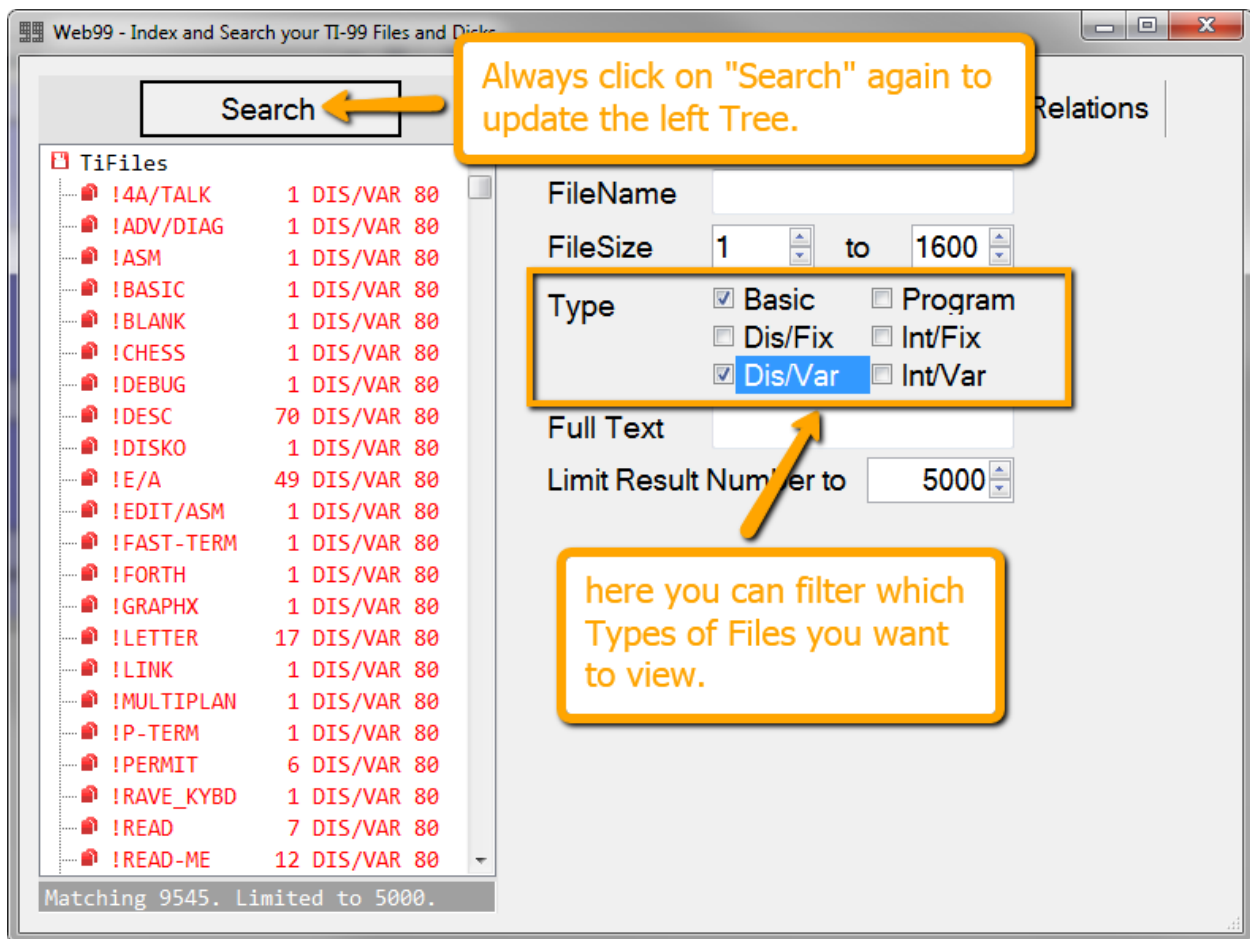


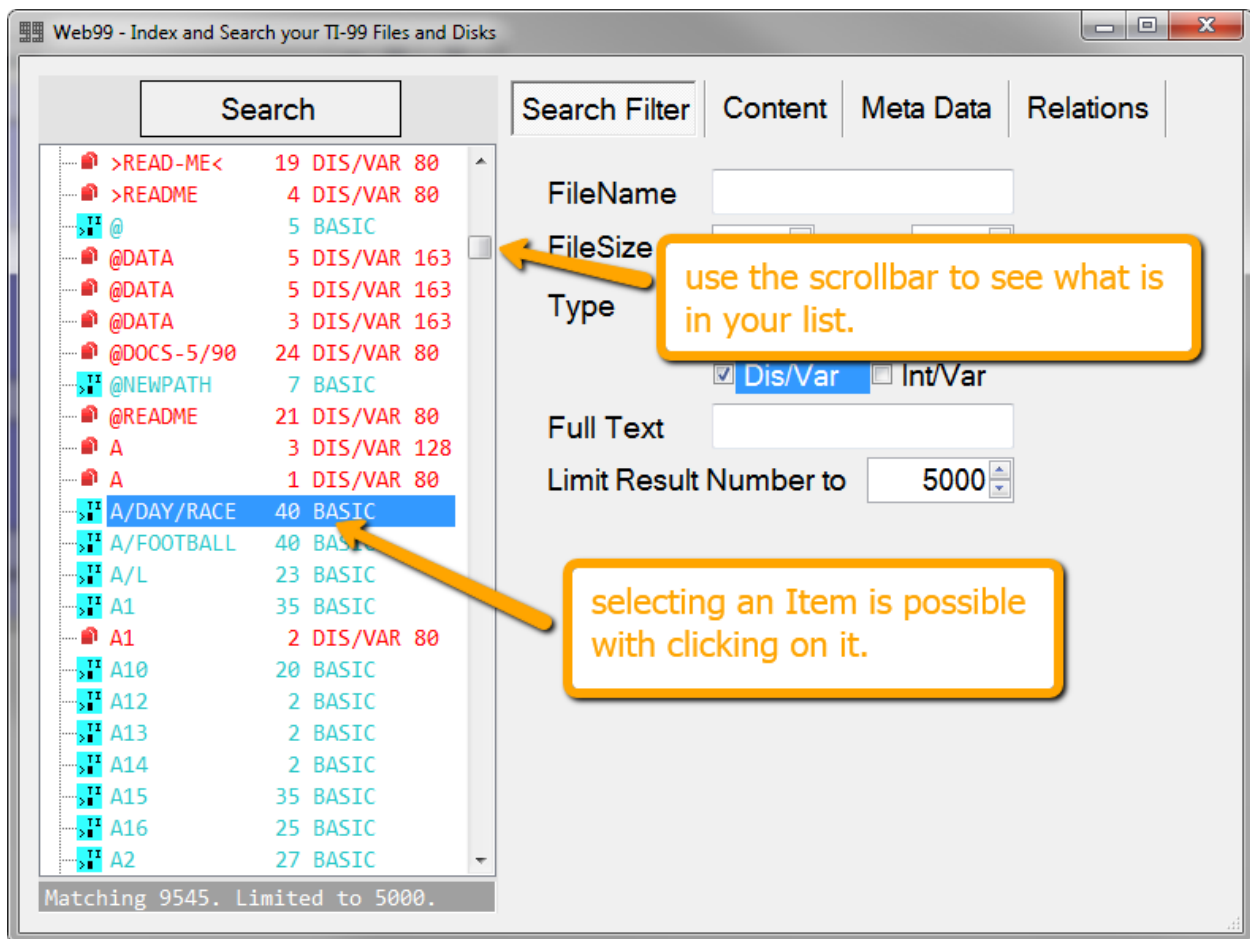












Web99 - Index and Search your TI-99 Files and Disks

Search

Search Filter: **Content** | Meta Data | Relations

FileName:

FileSize: 1 to 1600

click here to view the Basic Source Code or DIS/VAR Content of the selected Item.

| File Name | Size | Type |
|------------|------|-------------|
| >READ-ME< | 19 | DIS/VAR 80 |
| >README | 4 | DIS/VAR 80 |
| @ | 5 | BASIC |
| @DATA | 5 | DIS/VAR 163 |
| @DATA | 5 | DIS/VAR 163 |
| @DATA | 3 | DIS/VAR 163 |
| @DOCS-5/90 | 24 | DIS/VAR 80 |
| @NEWPATH | 7 | BASIC |
| @README | 21 | DIS/VAR 80 |
| A | 3 | DIS/VAR 128 |
| A | 1 | DIS/VAR 80 |
| A/DAY/RACE | 40 | BASIC |
| A/FOOTBALL | 40 | BASIC |
| A/L | 23 | BASIC |
| A1 | 35 | BASIC |
| A1 | 2 | DIS/VAR 80 |
| A10 | 26 | BASIC |
| A12 | 2 | BASIC |
| A13 | 2 | BASIC |
| A14 | 2 | BASIC |
| A15 | 35 | BASIC |
| A16 | 25 | BASIC |
| A2 | 27 | BASIC |

Matching 9545. Limited to 5000.

Each PROGRAM File is checked whether it's actually a Basic Program and marked as such, so you don't have to guess any longer.

Web99 - Index and Search your TI-99 Files and Disks

Search

| | | | |
|------------|----|---------|-----|
| >READ-ME< | 19 | DIS/VAR | 80 |
| >README | 4 | DIS/VAR | 80 |
| @ | 5 | BASIC | |
| @DATA | 5 | DIS/VAR | 163 |
| @DATA | 5 | DIS/VAR | 163 |
| @DATA | 3 | DIS/VAR | 163 |
| @DOCS-5/90 | 24 | DIS/VAR | 80 |
| @NEWPATH | 7 | BASIC | |
| @README | 21 | DIS/VAR | 80 |
| A | 3 | DIS/VAR | 128 |
| A | 1 | DIS/VAR | 80 |
| A/DAY/RACE | 40 | BASIC | |
| A/FOOTBALL | 40 | BASIC | |
| A/L | 23 | BASIC | |
| A1 | 35 | BASIC | |
| A1 | 2 | DIS/VAR | 80 |
| A10 | 20 | BASIC | |
| A12 | 2 | BASIC | |
| A13 | 2 | BASIC | |
| A14 | 2 | BASIC | |
| A15 | 35 | BASIC | |
| A16 | 25 | BASIC | |
| A2 | 27 | BASIC | |

Matching 9545. Limited to 5000.

Search Filter

Content

Meta Data

Relations

```
100 REM *****
110 REM *A DAY AT THE RACES**
120 REM *****
130 REM *SHEILA & RONALD****
140 REM **** DUFFIELD*****
150 REM *****MAY*1982*****
160 REM *KEY LARGO FL 33037**
170 REM *USE PRINTER OR TYPE*
180 REM *WRITER TO MAKE THE**
190 REM *RACE CARDS*****
200 REM *****
210 YW=1000 :: CALL CLEAR :: CALL SCREEN(2)
220 DISPLAY TAB(10);"A DAY AT":TAB(10);"THE RACES": : :
230 FOR X=96 TO 152 STEP 8 :: Y=Y+1 :: C$(Y)=STR$(X):: NEX
240 FOR X=1 TO 8 :: C=VAL(C$(X)):: CALL HCHAR(X+2,X+2,C,29
250 CALL HCHAR(23-X,X+2,C,29-2*X):: NEXT X :: CALL COLOR(9
260 CALL SCREEN(8):: FOR X=1 TO 250 :: NEXT X :: GOSUB 169
270 FOR Y=1 TO 2
280 FOR X=14 TO 9 STEP -1 :: CALL COLOR(X,X,X):: NEXT X
290 FOR X=9 TO 14 :: CALL COLOR(X,X-7,X-7):: NEXT X
300 NEXT Y
310 FOR X=14 TO 9 STEP -1
320 FOR Y=2 TO 9 :: CALL COLOR(X,Y,Y):: NEXT Y
330 NEXT X
340 FOR X=9 TO 14
350 FOR Y=2 TO 9 :: CALL COLOR(X,Y,Y):: NEXT Y
360 NEXT X
370 FOR DELAY=1 TO 200 :: NEXT DELAY
380 CALL CLEAR
390 CALL SCREEN(15):: LET RACE=RACE+1 :: IF RACE>6 THEN 16
400 DISPLAY AT(3,1):"  L A R G O - D O W N S"
```

Web99 - Index and Search your TI-99 Files and Disks

Search

| | | | |
|------------|----|---------|-----|
| >READ-ME< | 19 | DIS/VAR | 80 |
| >README | 4 | DIS/VAR | 80 |
| @ | 5 | BASIC | |
| @DATA | 5 | DIS/VAR | 163 |
| @DATA | 5 | DIS/VAR | 163 |
| @DATA | 3 | DIS/VAR | 163 |
| @DOCS-5/90 | 24 | DIS/VAR | 80 |
| @NEWPATH | 7 | BASIC | |
| @README | 21 | DIS/VAR | 80 |
| A | 3 | DIS/VAR | 128 |
| A | 1 | DIS/VAR | 80 |
| A/DAY/RACE | 40 | BASIC | |
| A/FOOTBALL | 40 | BASIC | |
| A/L | 23 | BASIC | |
| A1 | 35 | BASIC | |
| A1 | 2 | DIS/VAR | 80 |
| A10 | 20 | BASIC | |
| A12 | 2 | BASIC | |
| A13 | 2 | BASIC | |
| A14 | 2 | BASIC | |
| A15 | 35 | BASIC | |
| A16 | 25 | BASIC | |
| A2 | 27 | BASIC | |

Matching 9545. Limited to 5000.

Search Filter

Content

Meta Data

Relations

FileName: A/DAY/RACE
Sectors: 40
Type: BASIC
FileSize: 10219
TiFileId: 2c6aaf868ff1de233362496405b863e4
TiFileBinaryId: 67cd408f650f2d4826194d4d1965d40c

Basic Meta Data about the selected Item. This will be extended much more.

Web99 - Index and Search your TI-99 Files and Disks

Search Search Filter Content Meta Data **Relations**

| | |
|------------|---------------|
| A | 3 DIS/VAR 128 |
| A | 1 DIS/VAR 80 |
| A/DAY/RACE | 40 BASIC |
| A/FOOTBALL | 40 BASIC |
| A/L | 23 BASIC |
| A1 | 35 BASIC |
| A1 | 2 DIS/VAR 80 |
| A10 | 20 BASIC |
| A12 | 2 BASIC |
| A13 | 2 BASIC |
| A14 | 2 BASIC |
| A15 | 35 BASIC |
| A16 | 25 BASIC |
| A2 | 27 BASIC |
| A3 | 21 BASIC |
| A4 | 40 BASIC |
| A5 | 29 BASIC |
| A564* | 38 BASIC |
| A564I | 34 BASIC |
| A6 | 42 BASIC |
| A7 | 17 BASIC |
| A7 | 16 BASIC |
| A8 | 40 BASIC |

Matching 9545. Limited to 5000.

BASIC, 40 Sectors

- A/DAY/RACE
 - D:\TI-99\whtech2015-11-03\video\Chicago TI Fa
 - D:\TI-99\whtech2015-11-03\video\Chicago TI Fa

Web99 - Index and Search your TI-99 Files and Disks

Search Search Filter Content Meta Data **Relations**

| | |
|------------|-----------------|
| T002 | 33 PROGRAM |
| T003 | 33 PROGRAM |
| T004 | 33 PROGRAM |
| T00:1 | 31 PROGRAM |
| T00:2 | 32 PROGRAM |
| T00:3 | 32 PROGRAM |
| T00:4 | 31 PROGRAM |
| TODAY | 11 DIS/VAR 80 |
| TODAY | 10 DIS/VAR 80 |
| TODGAME | 51 PROGRAM |
| TOD_ARC | 480 INT/FIX 128 |
| TOE | 32 PROGRAM |
| TOEACH | 35 BASIC |
| TOF | 32 PROGRAM |
| TOG | 32 PROGRAM |
| TOKEN/READ | 21 DIS/VAR 163 |
| TOKENLIST | 5 DIS/VAR 80 |
| TOKENPRINT | 2 BASIC |
| TOKENS | 4 BASIC |
| TOKENS | 81 DIS/VAR 80 |
| TOMB | 40 DIS/FIX 80 |
| TOMB | 51 INT/VAR 254 |
| TOMB | 51 PROGRAM |
| TOMB | 51 PROGRAM |
| TOMB-CITY | 33 PROGRAM |
| TOMB-CITY1 | 33 PROGRAM |
| TOMB/A | 51 PROGRAM |
| TOMB/INS | 12 BASIC |
| TOMB/INS | 12 PROGRAM |

Matching 16140. All Visible.

PROGRAM, 51 Sectors

- ASSAULT
 - PC99
 - D:\TI-99\whtech2015-11-03\video\Chicago TI Fair 2014 Videos\Chicago TI Faire Disk 2014\TI_GAMESHELF\EA_ASSY_DSK_85\EA_81_85\TUNNELS_OF_DOOM\TOD.DSK
 - D:\TI-99\whtech2015-11-03\video\Chicago TI Fair 2014 Videos\Chicago TI Faire Disk 2014\TI_GAMESHELF\EA_ASSY_DSK_85\EA_81_85\TUNNELS_OF_DOOM\TOD.DSK
 - TOD DISK
 - D:\TI-99\whtech2015-11-03\video\Chicago TI Fair 2014 Videos\Chicago TI Faire Disk 2014\BETORI\CARTRIDGENOMANUALS\GAMES\TUNNELS_OF_DOOM_PH#3042\TOD.DSK
 - D:\TI-99\whtech2015-11-03\video\Chicago TI Fair 2014 Videos\Chicago TI Faire Disk 2014\BETORI\CARTRIDGENOMANUALS\GAMES\TUNNELS_OF_DOOM_PH#3042\TOD.DSK
- ATC
 - CHI0010
 - D:\TI-99\whtech2015-11-03\video\Chicago TI Fair 2014 Videos\Chicago TI Faire Disk 2014\LIBRARIES\LIB_CHICAGO\CHI_1_25\CHI0010.DSK
 - D:\TI-99\whtech2015-11-03\video\Chicago TI Fair 2014 Videos\Chicago TI Faire Disk 2014\LIBRARIES\LIB_CHICAGO\CHI_1_25\CHI0010.DSK
 - CHI0046
 - D:\TI-99\whtech2015-11-03\video\Chicago TI Fair 2014 Videos\Chicago TI Faire Disk 2014\LIBRARIES\LIB_CHICAGO\CHI_26_50\CHI0046.DSK
 - D:\TI-99\whtech2015-11-03\video\Chicago TI Fair 2014 Videos\Chicago TI Faire Disk 2014\LIBRARIES\LIB_CHICAGO\CHI_26_50\CHI0046.DSK
 - CHI0206
 - D:\TI-99\whtech2015-11-03\video\Chicago TI Fair 2014 Videos\Chicago TI Faire Disk 2014\LIBRARIES\LIB_CHICAGO\CHI_200_225\CHI0206.DSK
 - D:\TI-99\whtech2015-11-03\video\Chicago TI Fair 2014 Videos\Chicago TI Faire Disk 2014\LIBRARIES\LIB_CHICAGO\CHI_200_225\CHI0206.DSK
 - TOD DISK
 - D:\TI-99\whtech2015-11-03\video\Chicago TI Fair 2014 Videos\Chicago TI Faire Disk 2014\BETORI\CARTRIDGENOMANUALS\GAMES\TUNNELS_OF_DOOM_PH#3042\TOD.DSK
 - D:\TI-99\whtech2015-11-03\video\Chicago TI Fair 2014 Videos\Chicago TI Faire Disk 2014\BETORI\CARTRIDGENOMANUALS\GAMES\TUNNELS_OF_DOOM_PH#3042\TOD.DSK
 - XBI121
 - D:\TI-99\whtech2015-11-03\video\Chicago TI Fair 2014 Videos\Chicago TI Faire Disk 2014\LIBRARIES\LIB_BCS_111\BCS_060_079\BCS_DISK_074_1989_BCS_PD.DSK
 - D:\TI-99\whtech2015-11-03\video\Chicago TI Fair 2014 Videos\Chicago TI Faire Disk 2014\LIBRARIES\LIB_BCS_111\BCS_060_079\BCS_DISK_074_1989_BCS_PD.DSK
 - TODGAME
 - TOD DISK
 - D:\TI-99\whtech2015-11-03\video\Chicago TI Fair 2014 Videos\Chicago TI Faire Disk 2014\BETORI\CARTRIDGENOMANUALS\GAMES\TUNNELS_OF_DOOM_PH#3042\TOD.DSK
 - D:\TI-99\whtech2015-11-03\video\Chicago TI Fair 2014 Videos\Chicago TI Faire Disk 2014\BETORI\CARTRIDGENOMANUALS\GAMES\TUNNELS_OF_DOOM_PH#3042\TOD.DSK

Web99 - Index and Search your TI-99 Files and Disks

Search Filter Content Meta Data Relations

Search

we have 3 TiFiles that are all binary identical but they differ in their Filename:
 - ASSAULT
 - ATC
 - TODGAME

The actual Binary is always the Root of a Relations Tree.

These are the Disks that contain that binary with the Filename ASSAULT

These are the Disks that contain that binary with the Filename ATC

This is the Disk that contains that binary with the Filename TODGAME

Matching 16148. All Visible.

Web99 - Index and Search your TI-99 Files and Disks

Search Filter Content Meta Data Relations

Search

TiFiles

LOAD 47 BASIC

LOAD 45 BASIC

LOAD 43 BASIC

LOAD 42 BASIC

LOAD 41 BASIC

LOAD 37 BASIC

LOAD 37 BASIC

LOAD 37 BASIC

LOAD 36 BASIC

LOAD 35 BASIC

LOAD 34 BASIC

LOAD 34 BASIC

LOAD 33 BASIC

LOAD 31 BASIC

LOAD 31 BASIC

LOAD 31 BASIC

LOAD 31 BASIC

LOAD 31 BASIC

LOAD 30 BASIC

LOAD 30 BASIC

LOAD 30 BASIC

LOAD 30 BASIC

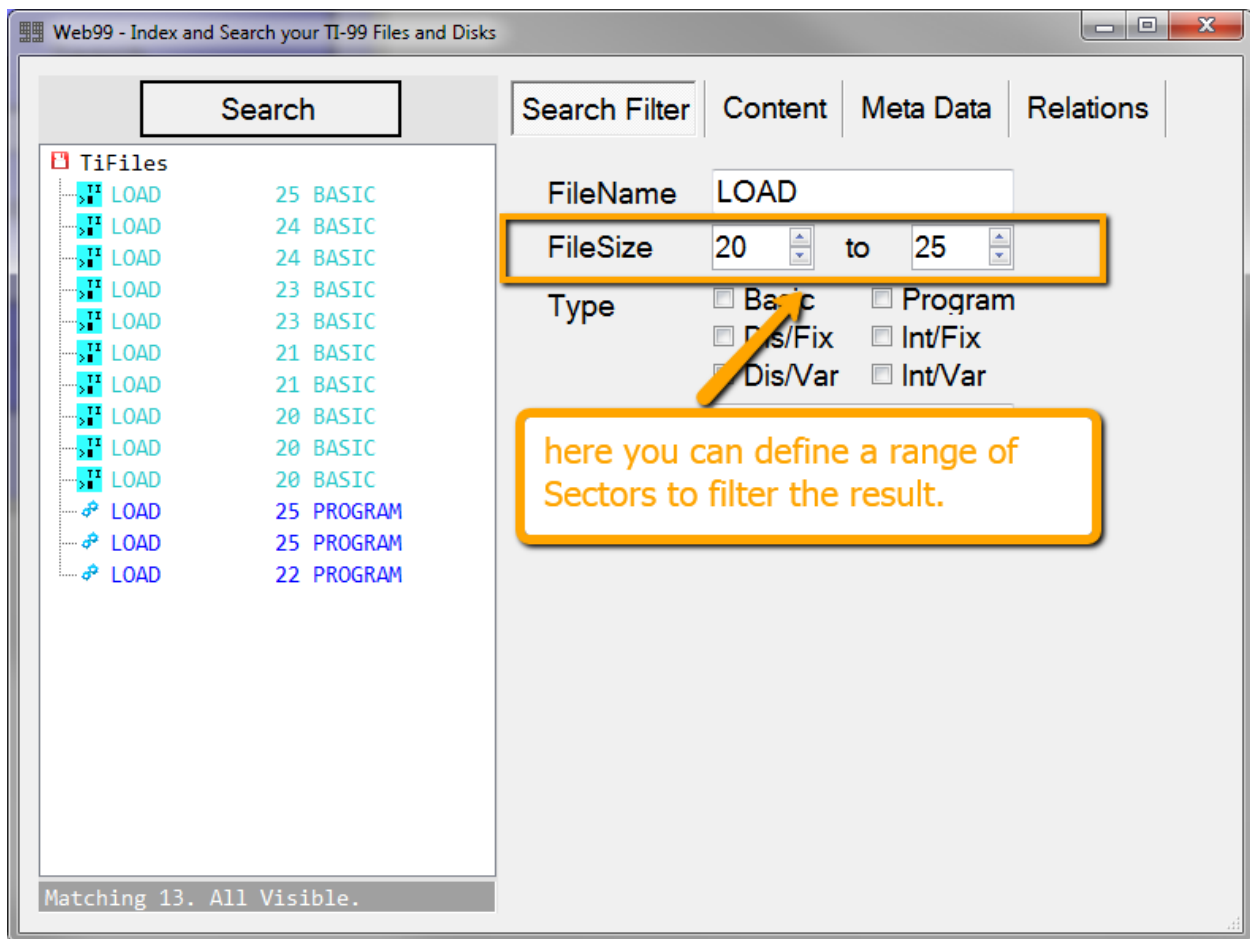
Matching 661. All Visible.

FileName LOAD

FileSize 1 to 1600

Type ☐ Basic ☐ Program ☐ Dis/Fix ☐ Int/Fix

here you can enter the name of the Ti File you are searching for. You can use ? and * as wildcards. It's case insensitive.
 Examples:
 ?oad
 GPL



Web99 - Index and Search your TI-99 Files and Disks

Search | Search Filter | Content | Meta Data | Relations

TiFiles

| | | |
|------------|----|-------|
| A10 | 20 | BASIC |
| A16 | 25 | BASIC |
| A3 | 21 | BASIC |
| AFGHANISTA | 24 | BASIC |
| AIRTRAFIX | 24 | BASIC |
| AIRTRAFFIC | 24 | BASIC |
| ALPHABET | 20 | BASIC |
| ASTRONOMY | 23 | BASIC |
| BARBIE | 22 | BASIC |
| BERLIN | 22 | BASIC |
| CANBALLER | 22 | BASIC |
| CANNIBALS | 25 | BASIC |
| CAR-RACE | 20 | BASIC |
| CAVATTACK | 25 | BASIC |
| CHARDES | 21 | BASIC |
| CHOPPER | 20 | BASIC |
| CITYATTACK | 23 | BASIC |
| CLIMBER | 23 | BASIC |
| COMPUTER | 22 | BASIC |
| DIAMNDDOOM | 24 | BASIC |
| EAGLE/I/X | 23 | BASIC |
| FISH | 24 | BASIC |

Matching 72. All Visible.

FileName

FileSize to

Type ☐ Basic ☐ Program
☐ Dis/Fix ☐ Int/Fix
☐ Dis/Var ☐ Int/Var

Full Text

Limit Result Number to

here you can do a Full Text Search within all Basic Source Code Files. DIS/VAR Files might work partially already as well. Always use wildcards in your search string for now.
Examples:
BARRY
say